

24 JUNE 2025 / LONDON

UNDER THE ARCHES OF LEAKE STREET

Headliner



REGISTER NOW



CREAM UK

Commercial Real Estate Asset Management

asset strategy

- + management
- + ESG
- + service
- + technology

COMMERCIAL & MIXED USE LANDLORDS & OPERATORS | THE GREAT ESTATES | CAMPUSES & LIFESTYLE DESTINATIONS

#CREAM UK

THE NEW EVENT BY SPACE+

Welcome to the New Home of Commercial Real Estate Asset Management



CREAM UK is the outstanding new annual event for Commercial Real Estate Asset Management.

It's where asset owners and their allies meet to discuss asset strategy, management, service, ESG and technology.

The event is designed for meaningful engagement. We stand against boring property conferences, and with alternative ideas and new approaches.

From immersive experiences to graffiti walls, the arches of Leake Street play host to the UK's most exciting new property event.

See you under the Arches.

Primary audience

commercial landlords
mixed-use landlords
flex operators

Big themes

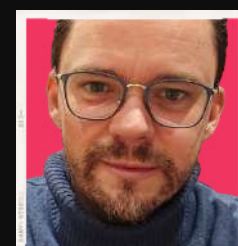
asset strategy
asset management
sustainability
social value
real estate as a service
technology

Key job titles

head of asset management
property director
portfolio director
senior asset manager
coo & cto
head of property operations
head of leasing
head of customer experience

Outcomes

more efficient portfolios
more attractive rental propositions
more sustainability real estate
better tenant relationships
thriving places



Rob Marten
Co-Founder
SPACE+

REGISTER NOW





Why Now? *the new era*

The growing performance gap between commercial buildings with a high sustainability, experience and technological offering – and those that are ageing – is both the biggest opportunity and the biggest problem facing asset owners and their investors and occupiers.

Why CREAM? *the new event*

CREAM helps landlords thrive; A meeting place – a marketplace – for ideas and solutions for tomorrow's buildings. Focusing on both human experience and technological performance.

Why join? *a valuable platform*

Join in the programme as Tribe Co-Host, panellist or keynote gives you gratis access to the whole event, and unlocks a 50% discount for your colleagues.

■ Meet the Co-Hosts



- Ronen Journo, Senior Managing Director, **Hines**
- Anthea Harris, Asset Management Director, **Related Argent**
- Andrew Mercer, Office Sector Lead, **LGIM**
- Nick White, Director Asset Management – Offices, **CBRE IM**
- Laura Fernie, Head of Commercial Offices, **Places for London**
- Laurence Jones, Head of Asset Management, **Trilogy Real Estate**
- Damien Renaut, Digital Buildings Lead, **Landsec**
- Tim Hamlin, Director of Asset Management, **Picton**
- Paul O'Grady, Director, Office Asset Management, **Canary Wharf Group**
- Matthew Barratt, Director Asset Management, **CBRE IM**
- Isabel Thomas, Head of Offices & Residential, **Shaftesbury**
- Jon Allgood, Head of Asset Management, **Seaforth Land**
- Chloe Prince, Portfolio Manager, **Landsec**
- Jacinta Roswell, Director of Operations, **URW**
- Richard Saul, Director Asset Management, **Ivanhoe Cambridge**
- Jack Sibley, Head of PropTech, **Related Argent**
- Naqash Tahir, Executive Director – R&D and Investments – Real AssetX, **PGIM**
- Toby Pullen, Director of Property, **The Max Barney Estate**
- Preen Pandya, Head of Asset Management, Westfield UK, **URW**
- Chris Fleetwood, Deputy COO, **Redevco**
- Deborah Green, Portfolio Director, **Redevco**



The programme is packed with 'Co-Hosts'. These are Keynotes, Panellists, Tribe Hosts & Co-Hosts.

By seeding each session with asset owners and operators, we ensure the highest quality of conversation.



Neall De Beer
Co-Founder
SPACE+

Headliners



Supporters

agenda/at-a-glance

#CREAM UK

8:30 REGISTRATION

9:20 MAIN STAGE CHAIR'S OPENING

9:30 MAIN STAGE KEYNOTE PROVOCATEUR Rethinking Asset Resilience & Value 

10:00 STRATEGY TRIBE
tp bennett
Repositioning - Viability, Product & Price Point

10:00 SKILLS TRIBE
aletheia
Place-Shaping Pilots & Testbeds - Becoming Agile Asset Leaders

10:00 INNOVATION TRIBE
Schneider Electric
Portfolio-Level Data Strategy - Ownership, Accountability & Value


10:00 IMPACT TRIBE
ALASCO
ESG Over Asset Lifecycles - Strategy, Measurement & Reporting

10:00 REaaS TRIBE
wavenet
CX & UX - Beyond the Hospitality Shift

11:00 NETWORKING BREAK

11:20 MAIN STAGE PANEL The Future of Asset Strategy & MGMT - Relevance, Service & Skills 

12:00 STRATEGY TRIBE
TRIGRR
Retrofitting - Low Tech Ideas for At-risk Assets


12:00 SKILLS TRIBE
AI for Asset Management - New Tools of the Trade 


12:00 INNOVATION TRIBE
Enabling the Vertical Campus - Moving from adoption to ROI 


12:00 IMPACT TRIBE
alvéole
ESG & Engagement - Involving Tenants in your ESG Strategy

12:00 REaaS TRIBE
koho
Space as a Service - Strategies for Customer Love & Retention

1:00 LUNCH

2:00 MAIN STAGE CASE STUDY TBA 

2:00 VIP THINKTANK
Commission me 


2:00 VIP THINKTANK
Commission me 

2:30 MAIN STAGE PANEL Delivering on Repositioned Assets - Tech, ESG & Financial Performance 


3:10 NETWORKING BREAK

3:30 STRATEGY TRIBE
TBA

3:30 SKILLS TRIBE
Equipping New Asset Leaders - From Surveyors to Sociologists 

3:30 INNOVATION TRIBE
TBA 

3:30 IMPACT TRIBE
Energy Strategy - Efficiency, Grid Edge & EVs 

3:30 VIP THINKTANK
Commission me 

4:30 MAIN STAGE CLOSING KEYNOTE Rethinking Asset Resilience & Value 

5:00 DELEGATE DRINKS 

6:00 'LOST PROPERTY' AFTER PARTY 

6:00 VIP DINNERS   

ALT/RESI
UK

1 May 2025 / London

Resi investment, development & operations

CREAM UK

24 June / London

Commercial Real Estate Asset Management

SPACE UK

27-28 January 2026 / London

Where property leaders meet

A portfolio of
world-class
property
events

Book Early / Pay less

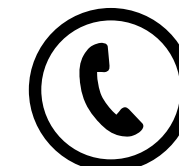
QUANTITY	EARLY BIRD (ENDS 1 MAY)	STANDARD RATE (ENDS 5 JUNE)	LATE RATE (6 JUNE - EVENT DAY)
1 Ticket	£499	£599	£699
2 Tickets	£998	£1198	£1398
3 Tickets	£1197.60	£1437.60	£1677.60
4 Tickets	£1596.80	£1916.80	£2236.80
5 Tickets	£1996	£2396	£2796
6 Tickets	£2395.20	£2875.20	£3355.20
7 Tickets	£2794.40	£3354.40	£3914.40
8 Tickets	£3193.60	£3833.60	£4473.60

Prices ex VAT

Earlier you book, more you save

+ 20% Group Discounts for 3 or more (built in to the grid above)
You don't need to give us the delegate names until later!

REGISTER NOW



PHONE US ON:
+44 (0)1462 744939